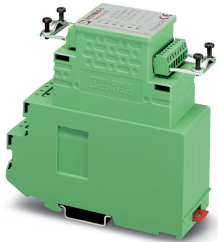


## Bus coupler - IBS ST 24 BKM-T - 2750154

Please be informed that the data shown in this PDF Document is generated from our Online Catalog. Please find the complete data in the user's documentation. Our General Terms of Use for Downloads are valid (<http://phoenixcontact.com/download>)



INTERBUS-ST bus terminal module, 24 V DC, with 8-pos. MINI-COMBICON plug, IP20 protection, consisting of: Terminal part with screw connection and module electronics

### Product Description

INTERBUS ST standard bus terminal modules

The INTERBUS bus terminal module connects the input/output modules of an ST station with the INTERBUS network.

Depending on the transmission medium used, the bus terminal modules are equipped with different bus connections. For copper conductors, D-SUB and MINI-COMBICON connectors are available. The fiber optic versions are equipped with F-SMA connectors.

The bus terminal modules are available in two different performance classes. A maximum of 4 or 8 input/output modules can be operated on one bus terminal module.

The bus terminal module takes on the following functions within a modular INTERBUS-ST station:

- Refreshing the INTERBUS remote bus signals
- Electrical isolation of the remote bus segments
- Decoupling of the outgoing remote bus or of the connected input/ output modules from the INTERBUS network with a software command
- Supply of the connected input/output modules with an electrically isolated voltage supply from an integrated power supply unit

### Your advantages

- Copper or fiber optic connection
- Additional I/Os onboard
- Additional remote/local bus branches



### Key Commercial Data

Packing unit	1 pc
GTIN	 4 017918 108298
GTIN	4017918108298
Weight per Piece (excluding packing)	284.800 g
Custom tariff number	85389091
Country of origin	Germany

# Bus coupler - IBS ST 24 BKM-T - 2750154

## Technical data

### Note

Utilization restriction	EMC: class A product, see manufacturer's declaration in the download area
-------------------------	---

### Dimensions

Width	44 mm
Height	117 mm
Depth	116 mm

### Ambient conditions

Ambient temperature (operation)	0 °C ... 55 °C
Ambient temperature (storage/transport)	-20 °C ... 70 °C
Permissible humidity (operation)	30 % ... 75 % (non-condensing)
Permissible humidity (storage/transport)	30 % ... 95 % (non-condensing)
Air pressure (operation)	86 kPa ... 108 kPa (up to 1500 m above sea level)
Air pressure (storage/transport)	66 kPa ... 108 kPa (up to 3500 m above sea level)
Degree of protection	IP20

### Interfaces

Designation	ST local bus
Connection method	ST local bus connector
Transmission speed	500 kbps
Designation	INTERBUS
Connection method	8-pos. MINI COMBICON connector
Designation connection point	Incoming/Outgoing Remote Bus
Number of positions	8

### Digital inputs

Connection technology	Screw connection
-----------------------	------------------

### Power supply for module electronics

Supply voltage	24 V DC
Supply voltage range	20 V DC ... 30 V DC (including ripple)
Ripple	3.6 V <sub>pp</sub> within the allowable voltage range
Current consumption	typ. 150 mA (without ST module expansions)
	typ. 350 mA (For maximum number of I/O modules on the ST local bus)

### General

Mounting type	DIN rail
Color	green
Net weight	200 g

# Bus coupler - IBS ST 24 BKM-T - 2750154

## Technical data

### General

Mounting position	Horizontal DIN rail
-------------------	---------------------

### Electrical isolation

Test section	Incoming remote bus / Outgoing remote bus 500 V AC 50 Hz 1 min.
	Incoming remote bus/ST interface 500 V AC 50 Hz 1 min.

### Standards and Regulations

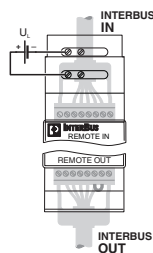
Protection class	III (IEC 61140, EN 61140, VDE 0140-1)
------------------	---------------------------------------

### Environmental Product Compliance

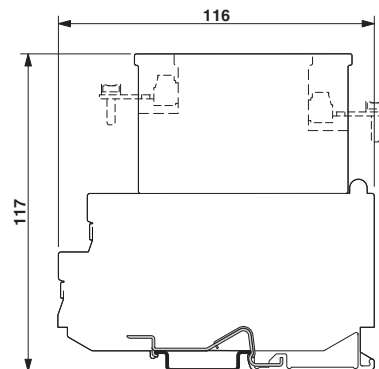
REACH SVHC	Lead 7439-92-1
China RoHS	Environmentally Friendly Use Period = 50 years
	For details about hazardous substances go to tab "Downloads", Category "Manufacturer's declaration"

## Drawings

Connection diagram



Dimensional drawing



## Classifications

### eCl@ss

eCl@ss 10.0.1	27242608
eCl@ss 11.0	27242608
eCl@ss 4.0	27250200
eCl@ss 4.1	27250200
eCl@ss 5.0	27250200
eCl@ss 5.1	27242600
eCl@ss 6.0	27242600
eCl@ss 7.0	27242608

# Bus coupler - IBS ST 24 BKM-T - 2750154

## Classifications

### eCl@ss

eCl@ss 9.0	27242608
------------	----------

### ETIM

ETIM 2.0	EC001434
ETIM 3.0	EC001604
ETIM 4.0	EC001604
ETIM 6.0	EC001604
ETIM 7.0	EC001604

### UNSPSC

UNSPSC 6.01	43172015
UNSPSC 7.0901	43201404
UNSPSC 11	43172015
UNSPSC 12.01	43201404
UNSPSC 13.2	32151602
UNSPSC 18.0	32151602
UNSPSC 19.0	32151602
UNSPSC 20.0	32151602
UNSPSC 21.0	32151602

## Approvals

### Approvals

---

#### Approvals

INTERBUS CLUB / EAC

---

#### Ex Approvals

---

### Approval details

INTERBUS CLUB	300/07.07.00
---------------	--------------

EAC		EAC-Zulassung
-----	---	---------------

## Bus coupler - IBS ST 24 BKM-T - 2750154

### Accessories

#### Accessories

#### Bridge

Jumper - IB ST LBC - 2836492



Spare local bus cable, for INTERBUS-ST modules

---

Insertion bridge - EB 84 IB ST BU - 2836269



Insertion bridges, divisible, isolated comb spine, color blue, 84-pos.

---

Insertion bridge - EB 84 IB ST RD - 2836272



Insertion bridges, divisible, isolated comb spine, color red, 84-pos.

---

### Mounting material

Shield connection clamp - IBS RB-SHIELD - 2722742



Replacement shield connection clamp for INTERBUS-ST bus terminal BKM-...

---

### Programming

## Bus coupler - IBS ST 24 BKM-T - 2750154

### Accessories

Software - AX DTM LIB - 2988065



DTM library

---

### Spare parts

Jumper - IB ST LBC - 2836492



Spare local bus cable, for INTERBUS-ST modules

---

---