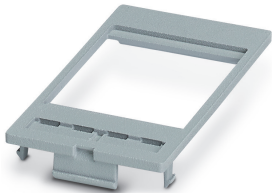



## Adapter plate - EO-SI-FRAME - 0804522

Please be informed that the data shown in this PDF Document is generated from our Online Catalog. Please find the complete data in the user's documentation. Our General Terms of Use for Downloads are valid (<http://phoenixcontact.com/download>)

Adapter plate for installing the control cabinet sockets (type EO-...) in the mounting frames (type VS-SI-EB-EMV.../ SI-M1A.../ SI-M1B...). Includes fastening hardware for the control cabinet socket



### Key Commercial Data

Packing unit	1
GTIN	 4 0 5 5 6 2 6 3 9 9 3 4 8
GTIN	4055626399348
Custom tariff number	39269097

### Technical data

#### Ambient conditions

Ambient temperature (operation)	-20 °C ... 60 °C
---------------------------------	------------------

#### General

Insulating material	PC/PBT
Flammability rating according to UL 94	V0

#### Standards and Regulations

Flammability rating according to UL 94	V0
--	----

#### Environmental Product Compliance

China RoHS	Environmentally friendly use period: unlimited = EFUP-e
	No hazardous substances above threshold values

## Adapter plate - EO-SI-FRAME - 0804522

### Classifications

#### eCl@ss

eCl@ss 10.0.1	27149290
eCl@ss 11.0	27371390
eCl@ss 5.0	27149200
eCl@ss 5.1	27149200
eCl@ss 6.0	27149200
eCl@ss 7.0	27149290
eCl@ss 9.0	27149290

#### ETIM

ETIM 6.0	EC002066
ETIM 7.0	EC002066