

## Panel feed-through terminal block - HDFK 50-VP - 0709123

Please be informed that the data shown in this PDF Document is generated from our Online Catalog. Please find the complete data in the user's documentation. Our General Terms of Use for Downloads are valid (<http://phoenixcontact.com/download>)

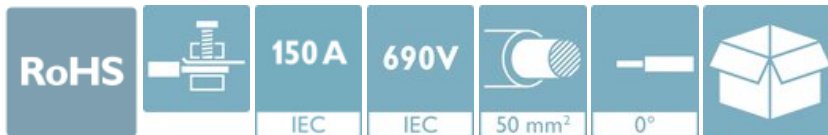


Panel feed-through terminal block, connection method: Screw connection with tension sleeve, Cable lug connection, number of positions: 1, load current: 150 A, cross section: 16 mm<sup>2</sup> - 50 mm<sup>2</sup>, connection direction of the conductor to plug-in direction: 0 °, width: 18.8 mm, color: gray


The figure shows a 7-position version

### Your advantages

- ✓ Well-known connection principle allows worldwide use
- ✓ Low temperature rise, thanks to maximum contact force
- ✓ Tool-free snap-in principle enables easy mounting on the device panel
- ✓ Automatic panel thickness compensation enables universal use
- ✓ Reliable seal even with low-viscosity molding compounds



### Key Commercial Data

|                                      |   |
|--------------------------------------|---|
| Packing unit                         | 1 pc  |
| Minimum order quantity               | 10 pc   |
| GTIN                                 | <br>4 017918 004941 |
| GTIN                                 | 4017918004941   |
| Weight per Piece (excluding packing) | 92.960 g  |
| Custom tariff number                 | 85369010  |
| Country of origin                    | Greece  |

### Technical data

#### Item properties

|                           |                                   |
|---------------------------|-----------------------------------|
| Brief article description | Panel feed-through terminal block |
| Range of articles         | HDFK 50-VP                        |

## Panel feed-through terminal block - HDFK 50-VP - 0709123

### Technical data

#### Item properties

|                       |         |
|-----------------------|---------|
| Pitch                 | 18.8 mm |
| Number of positions   | 1       |
| Number of connections | 2       |
| Number of potentials  | 1       |

#### Electrical parameters

|                             |   |
|-----------------------------|---|
| Nominal current             | 150 A   |
| Nom. voltage                | 690 V   |
| Maximum load current        | 150 A (with 50 mm <sup>2</sup> conductor cross section) |
| Rated voltage (III/3)       | 690 V   |
| Rated surge voltage (III/3) | 8 kV  |

#### Connection capacity, external

|   |   |
|---|---|
| Connection method   | Screw connection with tension sleeve      |
| Connection direction of the conductor to plug-in direction                                | 0 °                                       |
| Conductor cross section solid   | 16 mm <sup>2</sup> ... 50 mm <sup>2</sup> |
| Conductor cross section flexible  | 16 mm <sup>2</sup> ... 50 mm <sup>2</sup> |
| Conductor cross section flexible, with ferrule without plastic sleeve                     | 10 mm <sup>2</sup> ... 50 mm <sup>2</sup> |
| Conductor cross section, flexible, with ferrule, with plastic sleeve                      | 10 mm <sup>2</sup> ... 50 mm <sup>2</sup> |
| 2 conductors with same cross section, solid   | 6 mm <sup>2</sup> ... 16 mm <sup>2</sup>  |
| 2 conductors with same cross section, flexible  | 10 mm <sup>2</sup> ... 16 mm <sup>2</sup> |
| 2 conductors with same cross section, flexible, with ferrule without plastic sleeve       | 6 mm <sup>2</sup> ... 16 mm <sup>2</sup>  |
| 2 conductors with the same cross section, flexible, with TWIN ferrule with plastic sleeve | 6 mm <sup>2</sup> ... 10 mm <sup>2</sup>  |
| Internal cylindrical gage   | B10                                       |
| Stripping length  | 24 mm                                     |
| Torque  | 6 Nm ... 8 Nm                             |

#### Connection capacity, internal

|  |                      |
|--|----------------------|
| Connection method  | Cable lug connection |
| Connection direction of the conductor to plug-in direction | 0 °                  |
| Cable lug connection according to standard                 | M8 12 Nm 15 Nm       |

#### Material data - contact

|                         |   |
|-------------------------|---|
| Note                    | WEEE/RoHS-compliant, free of whiskers according to IEC 60068-2-82/ JEDEC JESD 201 |
| Contact material        | Cu alloy  |
| Surface characteristics | tin-plated  |

#### Material data - housing

# Panel feed-through terminal block - HDFK 50-VP - 0709123

## Technical data

### Material data - housing

|   |             |
|---|-------------|
| Housing color   | gray (7042) |
| Insulating material   | PA          |
| Insulating material group   | I           |
| CTI according to IEC 60112  | 600         |
| Flammability rating according to UL 94                            | V0          |
| Glow wire flammability index GWFI according to EN 60695-2-12      | 850         |
| Glow wire ignition temperature GWIT according to EN 60695-2-13    | 775         |
| Temperature for the ball pressure test according to EN 60695-10-2 | 125 °C      |

### Dimensions for the product

|              |  |
|--------------|--|
| Caption      | Schematische Abbildung - weitere Details siehe Produktfamilienzeichnung im Download Center |
| Width [ w ]  | 18.8 mm  |
| Height [ h ] | 54 mm  |
| Pitch        | 18.8 mm  |

### Dimensions for mounting cutout

|                 |               |
|-----------------|---------------|
| Plate thickness | 1 mm ... 6 mm |
|-----------------|---------------|

### Packaging information

|                            |                     |
|----------------------------|---------------------|
| Type of packaging          | packed in cardboard |
| Pieces per package         | 10                  |
| Denomination packing units | Pcs.                |

### Electrical tests

|                         |                    |
|-------------------------|--------------------|
| Rated current           | 150 A              |
| Conductor cross section | 50 mm <sup>2</sup> |

### Air clearances and creepage distances

|   |   |
|---|---|
| Clearances and creepage distances               | Metal wall 4.5 mm ... 6.0 mm Internal part molded IEC 60947-7-1:2002-07 |
| Application                                     | Metal wall 4.5 mm ... 6.0 mm  |
|   | Internal part molded  |
| Specification                                   | IEC 60947-7-1:2002-07   |
| Minimum clearance - inhomogeneous field (III/3) | 8 mm  |
| Minimum creepage distance value (III/3)         | 8 mm  |

### Standards and Regulations

|  |  |
|--|--|
| Connection in acc. with standard       | CSA  |
|  | IEC 60947-7-1  |
| Flammability rating according to UL 94 | V0   |
| Safety note                            | • Only electrically qualified personnel may install and operate the product. |

# Panel feed-through terminal block - HDFK 50-VP - 0709123

## Technical data

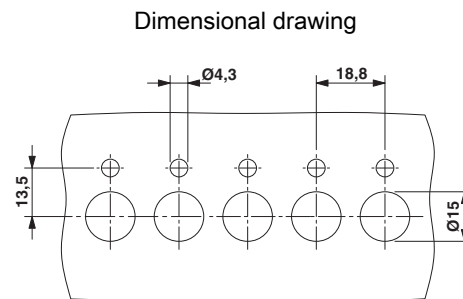
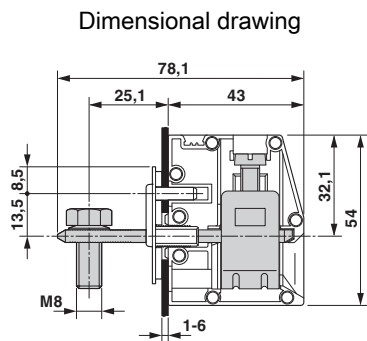
### Standards and Regulations

|  |  |
|--|--|
|  | To recognize and prevent danger, the qualified personnel must be familiar with the basics of electrical engineering.   |
|  | <ul style="list-style-type: none"> <li>Observe the technical data provided here and refer to the documents listed under "Downloads". The download area contains important information, such as installation notes, technical drawings, and 3D data.</li> </ul> |
|  | <ul style="list-style-type: none"> <li>The cable entry funnel is not safe to touch. Never connect or disconnect the terminal when it is energized. Take appropriate steps to ensure touch protection.</li> </ul>   |
|  | <ul style="list-style-type: none"> <li>To maintain the nominal voltage, align the cable lugs straight and centered, and cast the terminals on the inside.</li> </ul>   |
|  | # There is no electrical contact to the housing. Make sure that protective grounding is provided for green/yellow color variants and articles marked with PE.  |

### Environmental Product Compliance

|            |   |
|------------|---|
| China RoHS | Environmentally friendly use period: unlimited = EFUP-e |
|            | No hazardous substances above threshold values          |

## Drawings



## Classifications

### eCl@ss

|               |          |
|---------------|----------|
| eCl@ss 10.0.1 | 27141134 |
| eCl@ss 11.0   | 27141134 |
| eCl@ss 4.0    | 27141100 |
| eCl@ss 4.1    | 27141100 |
| eCl@ss 5.0    | 27141100 |
| eCl@ss 5.1    | 27141100 |
| eCl@ss 6.0    | 27141100 |
| eCl@ss 7.0    | 27141134 |

# Panel feed-through terminal block - HDFK 50-VP - 0709123

## Classifications

### eCl@ss

|            |          |
|------------|----------|
| eCl@ss 9.0 | 27141134 |
|------------|----------|

### ETIM

|          |          |
|----------|----------|
| ETIM 2.0 | EC001283 |
| ETIM 3.0 | EC001283 |
| ETIM 4.0 | EC001283 |
| ETIM 6.0 | EC001283 |
| ETIM 7.0 | EC001283 |

### UNSPSC

|               |          |
|---------------|----------|
| UNSPSC 6.01   | 30211811 |
| UNSPSC 7.0901 | 39121410 |
| UNSPSC 11     | 39121410 |
| UNSPSC 12.01  | 39121410 |
| UNSPSC 13.2   | 39121410 |
| UNSPSC 18.0   | 39121410 |
| UNSPSC 19.0   | 39121410 |
| UNSPSC 20.0   | 39121410 |
| UNSPSC 21.0   | 39121410 |

## Approvals


### Approvals

#### Approvals

CSA / UL Recognized / KEMA-KEUR / IECCE CB Scheme / EAC

#### Ex Approvals


### Approval details


|                    |   |   |       |
|--------------------|---|---|-------|
| CSA                |  | <a href="http://www.csagroup.org/services-industries/product-listing/">http://www.csagroup.org/services-industries/product-listing/</a> | 13631 |
|                    | B   | C   |       |
| Nominal voltage UN | 600 V   | 600 V   |       |
| Nominal current IN | 125 A   | 125 A   |       |


## Panel feed-through terminal block - HDFK 50-VP - 0709123

### Approvals

|                            |   |   |
|----------------------------|---|---|
|                            | B | C |
| mm <sup>2</sup> /AWG/kcmil | 6 | 6 |

|                            |   |   |                 |
|----------------------------|---|---|-----------------|
| UL Recognized              |  | <a href="http://database.ul.com/cgi-bin/XYV/template/LISEXT/1FRAME/index.htm">http://database.ul.com/cgi-bin/XYV/template/LISEXT/1FRAME/index.htm</a> | E60425-19890329 |
|                            | B   | C   |                 |
| Nominal voltage UN         | 600 V   | 600 V   |                 |
| Nominal current IN         | 170 A   | 170 A   |                 |
| mm <sup>2</sup> /AWG/kcmil | 6   | 6   |                 |

|                            |   |   |                  |
|----------------------------|---|---|------------------|
| KEMA-KEUR                  |  | <a href="http://www.dekra-certification.com">http://www.dekra-certification.com</a> | KEMA jetzt DEKRA |
|                            |   |   |                  |
| Nominal voltage UN         | 690 V   |   |                  |
| Nominal current IN         | 150 A   |   |                  |
| mm <sup>2</sup> /AWG/kcmil | 50  |   |                  |

|                            |   |   |          |
|----------------------------|---|---|----------|
| IECEE CB Scheme            |  | <a href="http://www.iecee.org/">http://www.iecee.org/</a> | NL-29947 |
|                            |   |   |          |
| Nominal voltage UN         | 690 V   |   |          |
| Nominal current IN         | 150 A   |   |          |
| mm <sup>2</sup> /AWG/kcmil | 50  |   |          |

|     |   |         |
|-----|---|---------|
| EAC |  | B.01687 |
|-----|---|---------|

### Accessories

Accessories

Labeled terminal marker

## Panel feed-through terminal block - HDFK 50-VP - 0709123

### Accessories

#### Marker for terminal blocks - UC-TM 16 CUS - 0824621



Marker for terminal blocks, can be ordered: by sheet, white, labeled according to customer specifications, mounting type: snap into tall marker groove, for terminal block width: 16 mm, lettering field size: 15.45 x 10.5 mm, Number of individual labels: 32

---

#### Zack Marker strip, flat - ZBF 16 CUS - 0827465



Zack Marker strip, flat, can be ordered: Strip, white, labeled according to customer specifications, mounting type: snap into flat marker groove, for terminal block width: 16 mm, lettering field size: 5.15 x 16 mm, Number of individual labels: 5

---

### Mounting material

#### Insertion profile - UKH 50 EP - 3009228



Insertion profile, color: silver

---

### Screwdriver tools

#### Screwdriver - SZS 1,2X8,0 VDE - 1205082



Screwdriver, slot-headed, VDE insulated, size: 1.2 x 8.0 x 175 mm, 2-component grip, with non-slip grip

---

### Terminal marking

## Panel feed-through terminal block - HDFK 50-VP - 0709123

### Accessories

#### Marker for terminal blocks - UC-TM 16 - 0819217



Marker for terminal blocks, Sheet, white, unlabeled, can be labeled with: BLUEMARK ID COLOR, BLUEMARK ID, BLUEMARK CLED, PLOTMARK, CMS-P1-PLOTTER, mounting type: snap into tall marker groove, for terminal block width: 16 mm, lettering field size: 15.45 x 10.5 mm, Number of individual labels: 32

---

#### Zack marker strip - ZB 16:UNPRINTED - 0827461



Zack marker strip, Strip, white, unlabeled, can be labeled with: PLOTMARK, CMS-P1-PLOTTER, mounting type: snap into tall marker groove, for terminal block width: 16 mm, lettering field size: 16 x 10.5 mm, Number of individual labels: 50

---

#### Zack marker strip - ZB 12:UNPRINTED - 0812120



Zack marker strip, Strip, white, unlabeled, can be labeled with: PLOTMARK, CMS-P1-PLOTTER, mounting type: snap into tall marker groove, for terminal block width: 12.2 mm, lettering field size: 12 x 10.5 mm, Number of individual labels: 5