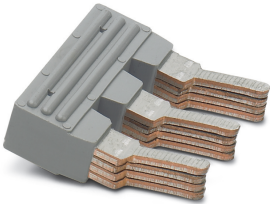



## Insertion bridge - EB 3-15 4-FACH - 0205148

Please be informed that the data shown in this PDF Document is generated from our Online Catalog. Please find the complete data in the user's documentation. Our General Terms of Use for Downloads are valid (<http://phoenixcontact.com/download>)

Insertion bridge, number of positions: 3, color: gray



### Key Commercial Data

Packing unit	1
GTIN	 4 017918 244293
GTIN	4017918244293
Custom tariff number	85366990

### Technical data

#### Technical data

Color	gray
Number of positions	3

### Environmental Product Compliance

China RoHS	Environmentally friendly use period: unlimited = EFUP-e
	No hazardous substances above threshold values

### Classifications

#### eCl@ss

eCl@ss 10.0.1	27141140
eCl@ss 11.0	27141140
eCl@ss 4.0	27141100

## Insertion bridge - EB 3-15 4-FACH - 0205148

### Classifications

#### eCl@ss

eCl@ss 4.1	27141100
eCl@ss 5.0	27141100
eCl@ss 5.1	27141100
eCl@ss 6.0	27141100
eCl@ss 7.0	27141140
eCl@ss 9.0	27141140

#### ETIM

ETIM 2.0	EC000489
ETIM 3.0	EC000489
ETIM 4.0	EC000489
ETIM 6.0	EC000489
ETIM 7.0	EC000489

#### UNSPSC

UNSPSC 6.01	30211829
UNSPSC 7.0901	39121426
UNSPSC 11	39121426
UNSPSC 12.01	39121426
UNSPSC 13.2	39121426
UNSPSC 18.0	39121426
UNSPSC 19.0	39121426
UNSPSC 20.0	39121426
UNSPSC 21.0	39121426