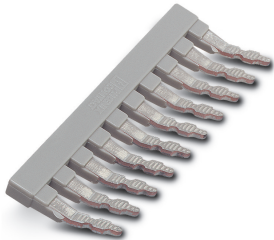


Insertion bridge - EB 10- 8 - 0202138

Please be informed that the data shown in this PDF Document is generated from our Online Catalog. Please find the complete data in the user's documentation. Our General Terms of Use for Downloads are valid (<http://phoenixcontact.com/download>)



Insertion bridge, pitch: 8 mm, number of positions: 10, color: gray



Key Commercial Data

Packing unit	1 pc
Minimum order quantity	10 pc
GTIN	 4 017918 098261
GTIN	4017918098261
Weight per Piece (excluding packing)	11.800 g
Custom tariff number	85366990
Country of origin	Poland

Technical data

Technical data

Color	gray
Material	Copper
Number of positions	10
Pitch	8 mm

Ambient conditions

Operating temperature	-60 °C ... 105 °C (max. short-term operating temperature 125°C)
Ambient temperature (storage/transport)	-25 °C ... 60 °C (for a short time, not exceeding 24 h, -60 °C to +70 °C)
Permissible humidity (storage/transport)	30 % ... 70 %
Ambient temperature (assembly)	-5 °C ... 70 °C

Insertion bridge - EB 10- 8 - 0202138

Technical data

Ambient conditions

Ambient temperature (actuation)	-5 °C ... 70 °C
---------------------------------	-----------------

Environmental Product Compliance

China RoHS	Environmentally friendly use period: unlimited = EFUP-e
	No hazardous substances above threshold values

Classifications

eCl@ss

eCl@ss 10.0.1	27141140
eCl@ss 11.0	27141140
eCl@ss 4.0	27141100
eCl@ss 4.1	27141100
eCl@ss 5.0	27141100
eCl@ss 5.1	27141100
eCl@ss 6.0	27141100
eCl@ss 7.0	27141140
eCl@ss 9.0	27141140

ETIM

ETIM 2.0	EC000489
ETIM 3.0	EC000489
ETIM 4.0	EC000489
ETIM 6.0	EC000489
ETIM 7.0	EC000489

UNSPSC

UNSPSC 6.01	30211829
UNSPSC 7.0901	39121426
UNSPSC 11	39121426
UNSPSC 12.01	39121426
UNSPSC 13.2	39121426
UNSPSC 18.0	39121426
UNSPSC 19.0	39121426
UNSPSC 20.0	39121426
UNSPSC 21.0	39121426

