

Type 2 surge arrester - PRT-1S-350/20/R - 2905977

Please be informed that the data shown in this PDF Document is generated from our Online Catalog. Please find the complete data in the user's documentation. Our General Terms of Use for Downloads are valid (<http://phoenixcontact.com/download>)




Surge protective device for space-saving PCB installation, in accordance with Type 2 / CLASS II, for single-phase TN and TT power supply systems.

Your advantages

- ✓ Small-scale onboard surge protector
- ✓ Reliable remote signaling alarm contact function
- ✓ Conformance with current standards

Key Commercial Data

Packing unit	1
GTIN	 4 055626 287607
GTIN	4055626287607
Custom tariff number	85363010

Technical data

Dimensions

Height	41 mm
Width	38.4 mm
Depth	22.4 mm

Ambient conditions

Ambient temperature (operation)	-40 °C ... 85 °C
Ambient temperature (storage/transport)	-40 °C ... 85 °C
Altitude	≤ 2000 m (amsl (above mean sea level))
Permissible humidity (operation)	5 % ... 95 %

Type 2 surge arrester - PRT-1S-350/20/R - 2905977

Technical data

Ambient conditions

Shock (operation)	25g (Half-sine / 11 ms / 3x ±X, ±Y, ±Z)
Vibration (operation)	5g (5 ... 500 Hz / 2.5 h / X, Y, Z)

General

IEC test classification	II
	T2
EN type	T2
IEC power supply system	TN-S
	TT
Mode of protection	L-N
	L-PE
	N-PE
Mounting type	PCB mounting
Color	light grey RAL 7035
Housing material	PA 6.6
Degree of pollution	2
Flammability rating according to UL 94	V-0
Type	PCB onboard surge protector
Surge protection fault message	Remote indication contact

Protective circuit

Nominal voltage U_N	230 V AC (TN)
	230 V AC (TT)
Nominal frequency f_N	50 Hz (60 Hz)
Maximum continuous voltage U_C	350 V AC
Residual current I_{PE}	$\leq 50 \mu A$
Standby power consumption P_C	$\leq 20 \text{ mVA}$
Nominal discharge current I_n (8/20) μs	20 kA
Short-circuit current rating I_{SCCR}	1 kA
Voltage protection level U_p (L-N)	$\leq 2.5 \text{ kV}$
Voltage protection level U_p (L-PE)	$\leq 1.8 \text{ kV}$
Voltage protection level U_p (N-PE)	$\leq 1.8 \text{ kV}$
TOV behavior at U_T (L-N)	336 V AC (5 s / withstand mode)
	440 V AC (120 min / withstand mode)
TOV behavior at U_T (N-PE)	1200 V AC (200 ms / safe failure mode)
Response time t_A (L-N)	$\leq 25 \text{ ns}$
Response time t_A (L-PE)	$\leq 100 \text{ ns}$
Response time t_A (N-PE)	$\leq 100 \text{ ns}$

Type 2 surge arrester - PRT-1S-350/20/R - 2905977

Technical data

Protective circuit

Max. backup fuse with branch wiring	63 A (MCB C)
-------------------------------------	--------------

Indicator/remote signaling

Switching function	N/C contact
Operating voltage	5 V AC ... 250 V AC
	125 V AC (UL)
	30 V DC
Operating current	5 mA AC ... 1 A AC
	1 A AC (UL)
	1 A DC

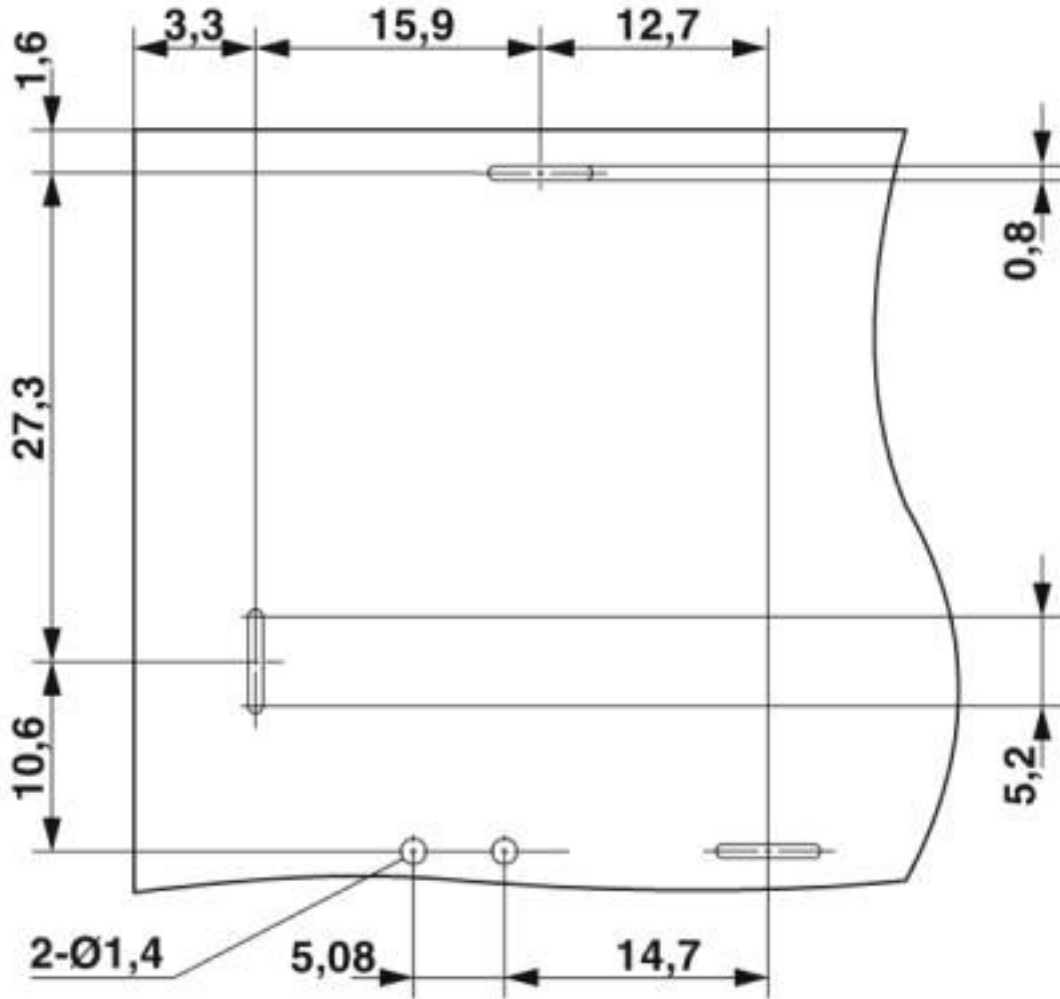
Standards and Regulations

Standards/regulations	IEC 61643-11 2011
	EN 61643-11 2012

Drawings

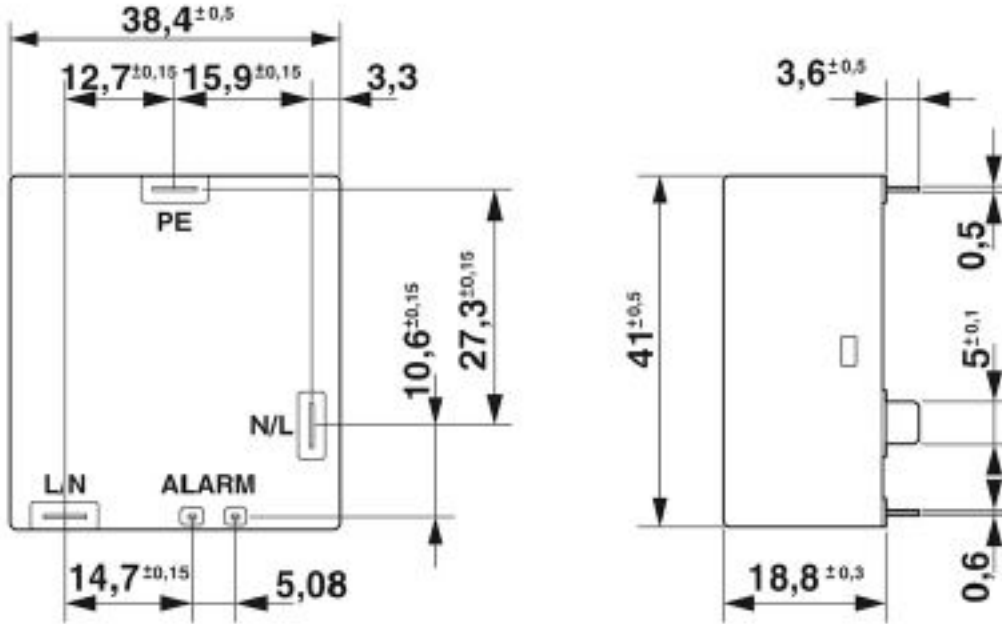
Type 2 surge arrester - PRT-1S-350/20/R - 2905977

Drilling diagram



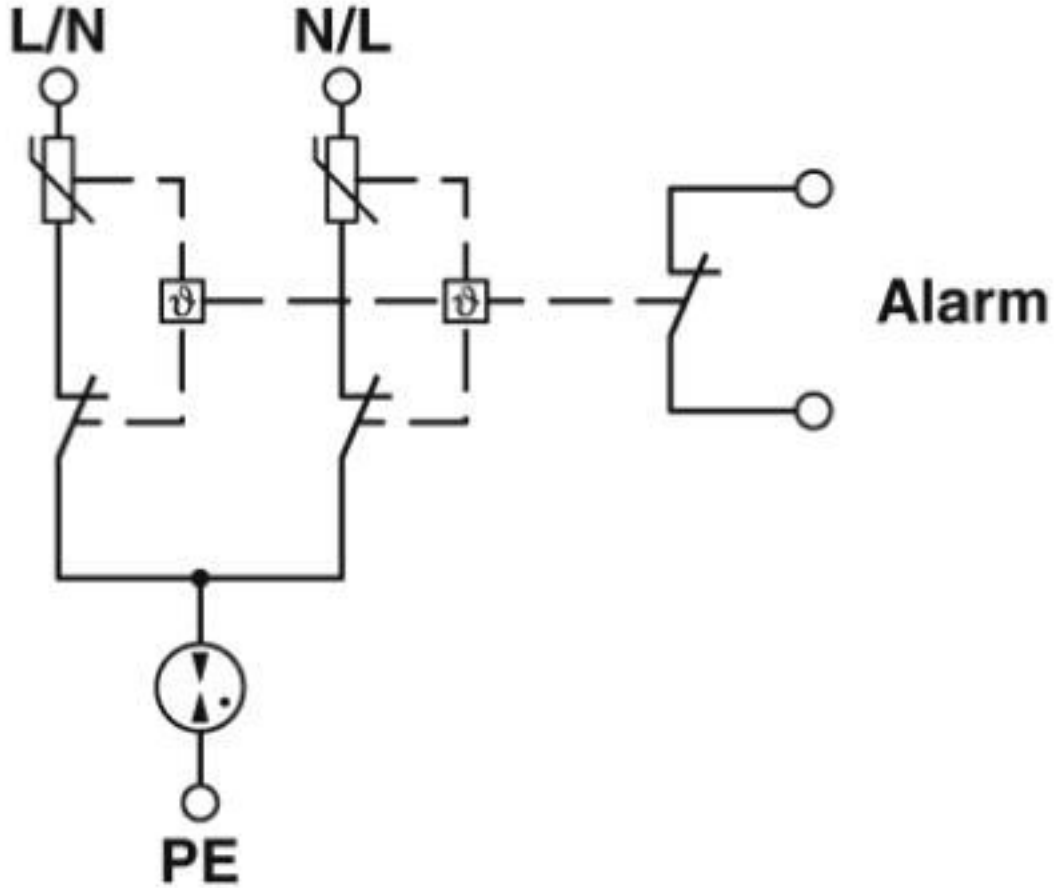
Type 2 surge arrester - PRT-1S-350/20/R - 2905977

Dimensional drawing



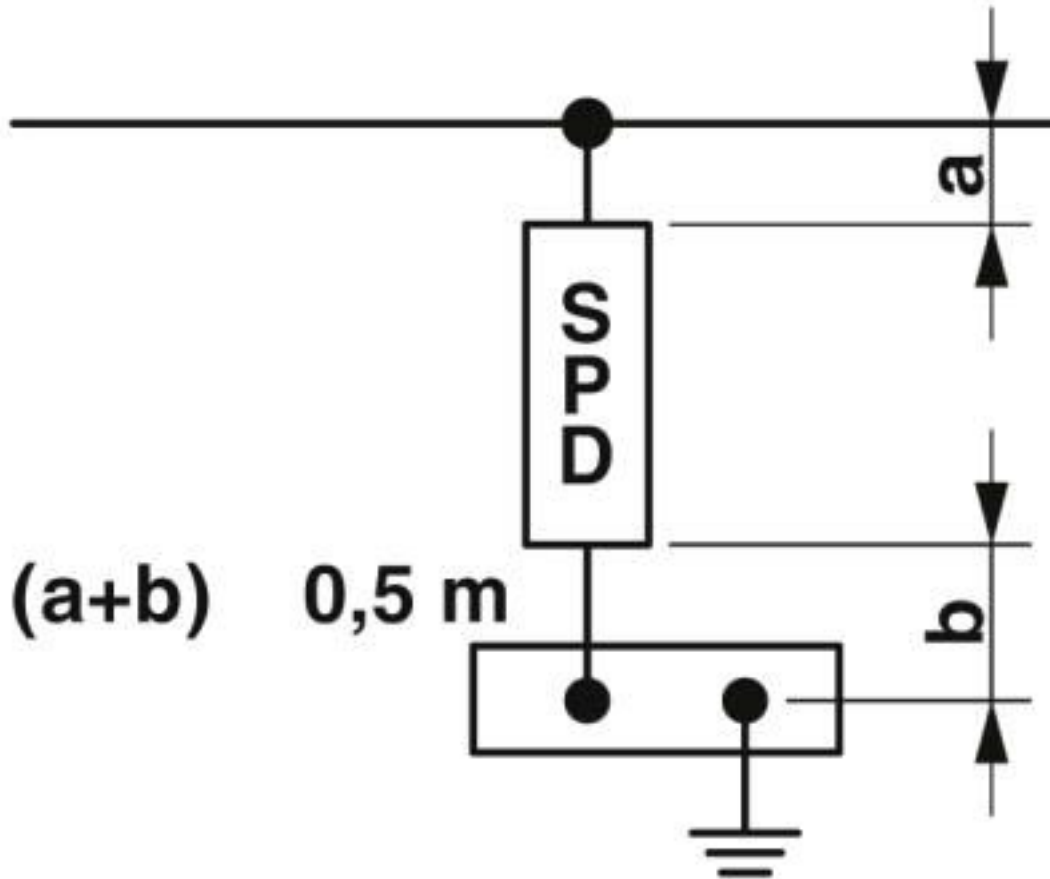
Type 2 surge arrester - PRT-1S-350/20/R - 2905977

Circuit diagram



Type 2 surge arrester - PRT-1S-350/20/R - 2905977

Circuit diagram



Classifications

eCl@ss

eCl@ss 10.0.1	27130805
eCl@ss 5.1	27130801
eCl@ss 6.0	27130800
eCl@ss 7.0	27130805
eCl@ss 8.0	27130805
eCl@ss 9.0	27130805

ETIM

ETIM 5.0	EC000941
ETIM 6.0	EC000941
ETIM 7.0	EC000941

