

## Surge protection device - CN-UB-280DC-BB - 2818850

Please be informed that the data shown in this PDF Document is generated from our Online Catalog. Please find the complete data in the user's documentation. Our General Terms of Use for Downloads are valid (<http://phoenixcontact.com/download>)



Attachment plug with replaceable surge protection for coaxial signal interfaces. Connection: N connector socket/ socket

### Your advantages

- ✓ For outdoor installations
- ✓ Mounting plate enables mounting, e.g., in a control cabinet
- ✓ Replaceable, gas-filled arrester
- ✓ Installed as surge protection between antenna and wireless module

### Key Commercial Data

Packing unit	1 pc
GTIN	
GTIN	4017918164027
Weight per Piece (excluding packing)	140.000 g
Custom tariff number	85363010
Country of origin	Germany

### Technical data

#### Dimensions

Height	25 mm
Width	25 mm
Depth	67 mm

#### Ambient conditions

Ambient temperature (operation)	-40 °C ... 80 °C
---------------------------------	------------------

## Surge protection device - CN-UB-280DC-BB - 2818850

### Technical data

#### Ambient conditions

Altitude	≤ 2000 m (amsl (above mean sea level))
Degree of protection	IP55

#### General

Housing material	Nickel-plated brass
Overvoltage category	III
Degree of pollution	2
Mounting type	Connection-specific intermediate plugging
Type	Attachment plug
Direction of action	Line-Shield/Earth Ground

#### Additional descriptions

Note	To meet the discharge conditions for DC voltages, please note the following information: "The surge protective device should be used together with a transmitter unit, which shuts down in the event of a short-circuit."
------	---

#### Protective circuit

IEC test classification	C1
	C2
	C3
	D1
Maximum continuous voltage $U_C$	280 V DC
	195 V AC
Rated current	5 A (25 °C)
Operating effective current $I_C$ at $U_C$	≤ 1 μA
Nominal discharge current $I_n$ (8/20) μs (line-earth)	20 kA
Nominal discharge current $I_n$ (8/20) μs (line-shield)	20 kA
Pulse discharge current $I_{imp}$ (10/350) μs (line-earth)	2.5 kA
Pulse discharge current $I_{imp}$ (10/350) μs (line-shield)	2.5 kA
Total discharge current $I_{total}$ (8/20) μs	20 kA
Max. discharge current $I_{max}$ (8/20) μs maximum (line-earth)	20 kA
Max. discharge current $I_{max}$ (8/20) μs maximum (line-shield)	20 kA
Nominal pulse current $I_{an}$ (10/1000) μs (line-earth)	100 A
Nominal pulse current $I_{an}$ (10/1000) μs (line-shield)	100 A
Output voltage limitation at 1 kV/μs (line-earth) spike	≤ 900 V
Output voltage limitation at 1 kV/μs (line-shield) spike	≤ 900 V
Voltage protection level $U_p$ (line-earth)	≤ 900 V (C1 - 1 kV/500 A)
	≤ 1.1 kV (C2 - 10 kV / 5 kA)

## Surge protection device - CN-UB-280DC-BB - 2818850

### Technical data

#### Protective circuit

	$\leq 1$ kV (C3 - 25 A)
Voltage protection level $U_p$ (line-shield)	$\leq 900$ V (C1 - 1 kV/500 A)
	$\leq 1.1$ kV (C2 - 10 kV / 5 kA)
	$\leq 1$ kV (C3 - 25 A)
Response time $t_A$	$\leq 100$ ns
Input attenuation aE, asym.	typ. 0.1 dB ( $\leq 1.2$ GHz / 50 $\Omega$ )
	typ. 0.2 dB ( $\leq 2.2$ GHz / 50 $\Omega$ )
Cut-off frequency $f_g$ (3 dB), asym. (shield) in 50 Ohm system	$> 3$ GHz
Standing wave ratio SWR in a 50 $\Omega$ system	typ. 1.1 ( $\leq 2$ GHz)
Permissible HF power $P_{max}$ at VSWR = xx (50 ohm system)	700 W (VSWR = 1.1)
	200 W (VSWR = $\infty$ )
Capacity	typ. 1.5 pF
Surge protection fault message	none
Impulse durability (line-earth)	C1 - 1 kV / 500 A
	C2 - 10 kV / 5 kA
	C3 - 100 A
	D1 - 2.5 kA
Impulse durability (line-shield)	C1 - 1 kV / 500 A
	C2 - 10 kV/5 kA
	C3 - 100 A
	D1 - 2.5 kA

#### Connection data

Connection method	N connector 50 $\Omega$
Connection method IN	N connector, female
Connection method OUT	N connector, female

#### Standards and Regulations

Standards/specifications	IEC 61643-21 2000 + A1:2008
	EN 61643-21 2001 + A1:2009

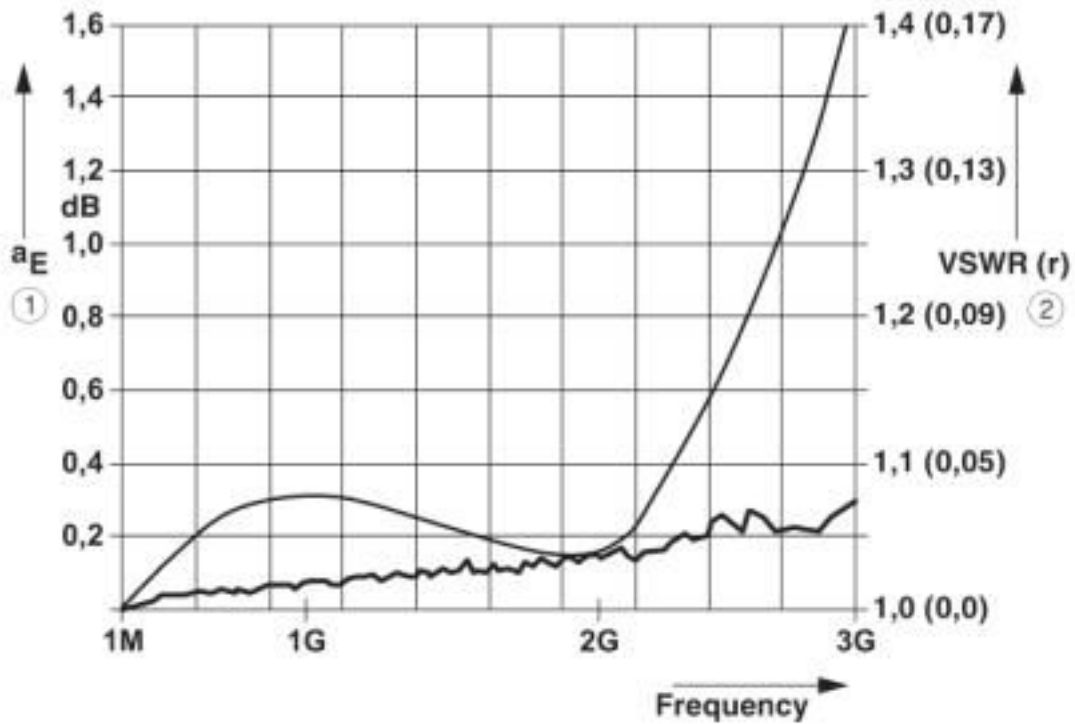
#### Environmental Product Compliance

China RoHS	Environmentally Friendly Use Period = 50 years
	For details about hazardous substances go to tab "Downloads", Category "Manufacturer's declaration"

### Drawings

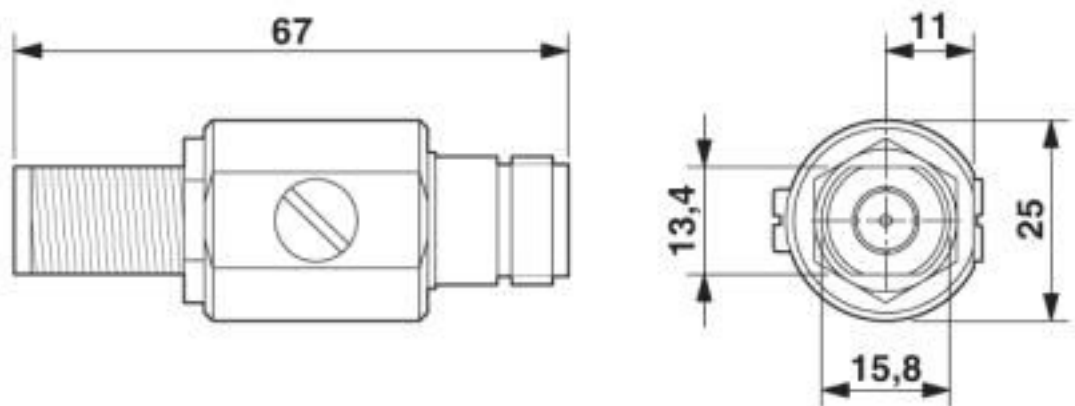
# Surge protection device - CN-UB-280DC-BB - 2818850

Diagram



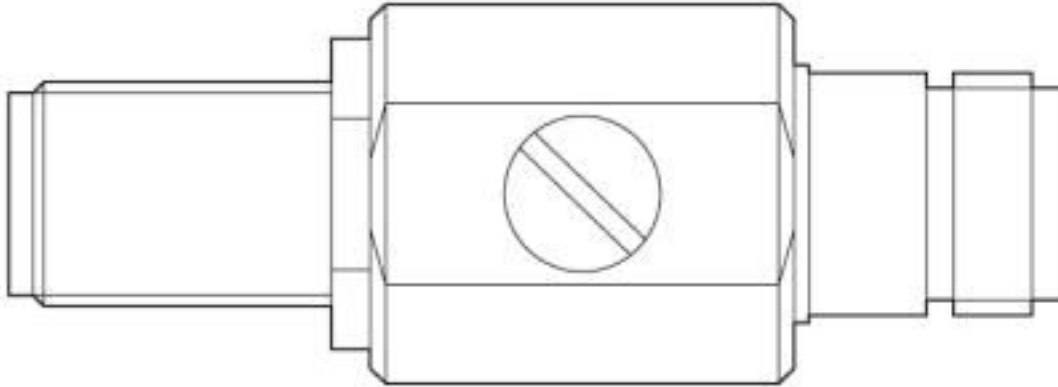
- ① Typical attenuation curve for CN-UB-280DC...
- ② Typical VSWR at CN-UB-280DC...

Dimensional drawing

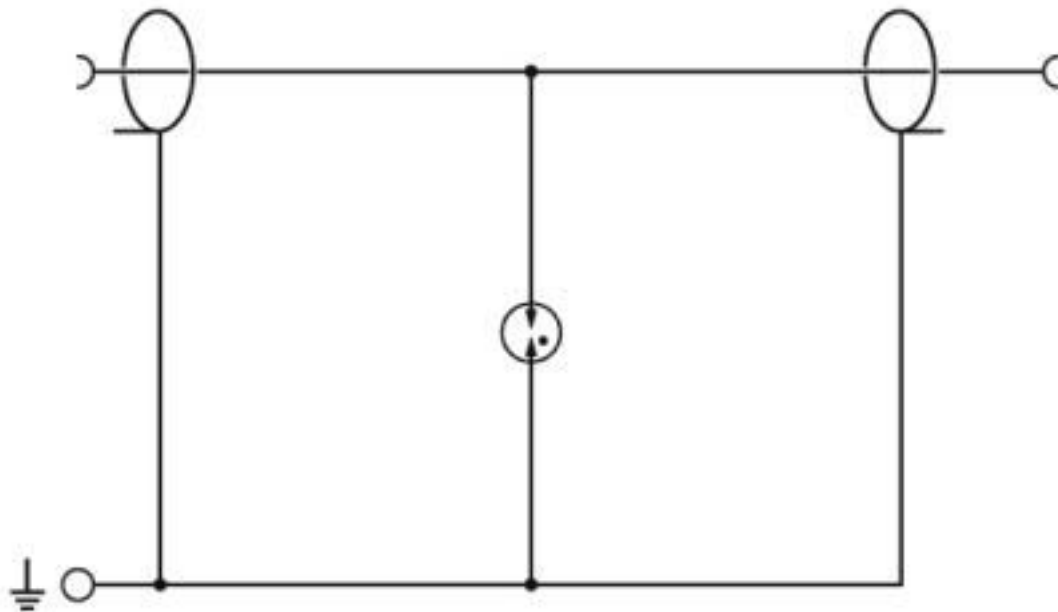


# Surge protection device - CN-UB-280DC-BB - 2818850

Product drawing



Circuit diagram



## Classifications

eCl@ss

eCl@ss 10.0.1	27130807
eCl@ss 4.0	27130800
eCl@ss 4.1	27130800
eCl@ss 5.0	27130800
eCl@ss 5.1	27130800
eCl@ss 6.0	27130800

## Surge protection device - CN-UB-280DC-BB - 2818850

### Classifications

#### eCl@ss

eCl@ss 7.0	27130807
eCl@ss 8.0	27130807
eCl@ss 9.0	27130807

#### ETIM

ETIM 2.0	EC000943
ETIM 3.0	EC000943
ETIM 4.0	EC000943
ETIM 5.0	EC000943
ETIM 6.0	EC000943
ETIM 7.0	EC000943

#### UNSPSC

UNSPSC 6.01	30212010
UNSPSC 7.0901	39121610
UNSPSC 11	39121610
UNSPSC 12.01	39121610
UNSPSC 13.2	39121620
UNSPSC 18.0	39121620
UNSPSC 19.0	39121620
UNSPSC 20.0	39121620
UNSPSC 21.0	39121620

### Approvals

#### Approvals

---

#### Approvals

UL Listed / UL Listed / EAC

---

#### Ex Approvals

UL Listed / cUL Listed / cULus Listed

---

#### Approval details

## Surge protection device - CN-UB-280DC-BB - 2818850

### Approvals

UL Listed		<a href="http://database.ul.com/cgi-bin/XYV/template/LISEXT/1FRAME/index.htm">http://database.ul.com/cgi-bin/XYV/template/LISEXT/1FRAME/index.htm</a>	FILE E 362540
Nominal voltage UN		280 V	
Nominal current IN		5 A	

UL Listed		<a href="http://database.ul.com/cgi-bin/XYV/template/LISEXT/1FRAME/index.htm">http://database.ul.com/cgi-bin/XYV/template/LISEXT/1FRAME/index.htm</a>	FILE E 138168
-----------	--	---	---------------

EAC		RU C- DE.A*30.B01561
-----	--	-------------------------

### Accessories

#### Accessories

##### Assembly adapter

Mounting plate - CN-UB/MP - 2818135



Tongue for attaching the CN-UB..., to housing panels, for example.

Mounting plate - CN-UB/MP-90DEG-50 - 2803137



Angled bracket for individually fixing CN-UB... to housing panels, for example.

#### Spare parts

## Surge protection device - CN-UB-280DC-BB - 2818850

### Accessories

Gas-filled surge arrester - CN-UB-G1 - 2818203



Reserve gas-filled surge arrester for CN-UB-280DC...

---

---